

# Shell Mysella S5 S



- Extended oil life
- Extra protection against sour gas



**DESIGNED TO MEET CHALLENGES**

Every part of your machine or process has been meticulously engineered, so you want to use a lubricant that has been designed to ensure that your equipment is well protected and works efficiently.

The Shell Mysella range of gas-engine oils has been developed to enable equipment operators to select the oil that will deliver optimum value to their operations through

- **wear protection**
- **long oil life**
- **system efficiency.**

## PERFORMANCE AT A GLANCE

	Protection	Oil life	System efficiency
<b>Shell Mysella S5 S</b> ■ Extended oil life ■ Extra protection against sour gas	✓✓✓✓	✓✓✓✓✓	✓✓✓✓
<b>Shell Mysella S3 S</b> ■ Extra protection ■ Medium ash content for four-stroke engines	✓✓✓	✓✓✓	✓✓✓

Performance level is a relative indication only.

## A LONG-LIFE, LOW ASH STATIONARY-GAS-ENGINE OIL FOR APPLICATIONS USING SOUR GASES

Shell Mysella S5 S is Shell's high-performance, long-life gas-engine oil for engines using biogas, sewage gas, landfill gas or other sour gases. It can provide

- extended oil-drain intervals in engines in which oil life is a limiting operational factor
- excellent engine cleanliness and protection
- reduced combustion chamber deposits
- low oil consumption.

Shell Mysella S5 S has extended oil life characteristics that can provide cost savings, as less oil needs to be purchased and less deposit-related maintenance is required.

### Key data

SAE: 40; BN: 5.3; ash: 0.57%

## DESIGNED FOR LONG OIL LIFE

Owing to its good resistance to oxidation and nitration and the strong base additives in its formulation, Shell Mysella S5 S will provide a significantly longer oil life compared with a standard-grade gas-engine oil<sup>1</sup>.

<sup>1</sup>Oil life will depend on the level of contaminants in the gas.

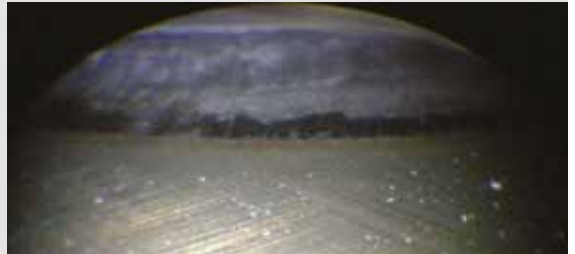
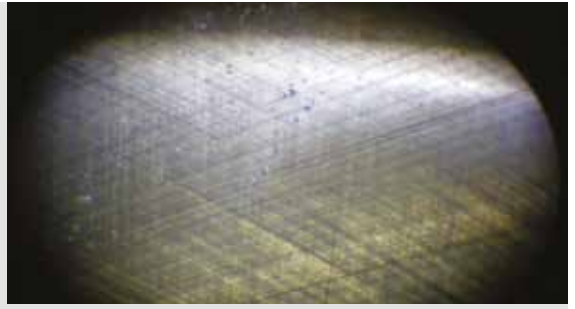


## DESIGNED TO PROTECT

Shell Mysella S5 S has good anti-wear properties and offers superior control of oil-related deposits. It is qualified as a low ash oil and minimises the contribution of oil ash to combustion chamber deposits. Shell Mysella S5 S is compatible with engines equipped with exhaust emission catalysts for carbon monoxide, NOx and formaldehyde.

## DESIGNED FOR HIGH EFFICIENCY

Shell Mysella S5 S is designed to reduce fouling and clogging in charge air coolers in engines that use crank case gas recirculation.



## SPECIFICATIONS AND APPROVALS

Approval processes and validation testing programmes are ongoing with the following engine manufacturers:

- Caterpillar
- GE-Jenbacher
- MAN
- MAN B&W Diesel
- MDE Dezentrale Energiesysteme
- Mitsubishi Heavy Industries
- Rolls-Royce
- Wärtsilä
- Waukesha.

**EXCELLENT CONDITION:** After 3,670 running hours with Shell Mysella S5 S, the cylinder liners were in excellent condition with very little wear of the honing pattern. The engine's low and stable oil consumption also confirms the good condition.

**TO DATE, SHELL MYSELLA S5 S HAS RUN FOR OVER 20,000 HOURS IN MODERN GE-JENBACHER GAS ENGINES BURNING SOUR GAS.**

## APPLICATIONS



Suitable for use in four-stroke gas engines used for power generation and cogeneration (combined heat and power) systems

## REAL-WORLD VALUE DELIVERY

Shell Mysella S5 S is the latest low ash, natural-gas-engine oil from Shell. It has been specially formulated to offer extended oil-drain intervals and improved protection in engines fuelled by sour gas.

## FULL PRODUCT AND SERVICE PORTFOLIO

Whatever your needs or application, we can provide a full range of oils and greases, including synthetic, high-performance products and additional services.

For more information, please contact

Form fields for contact information, including name, email, and phone number.